

Quick Opening Closure

Rx1™ Byonet Type

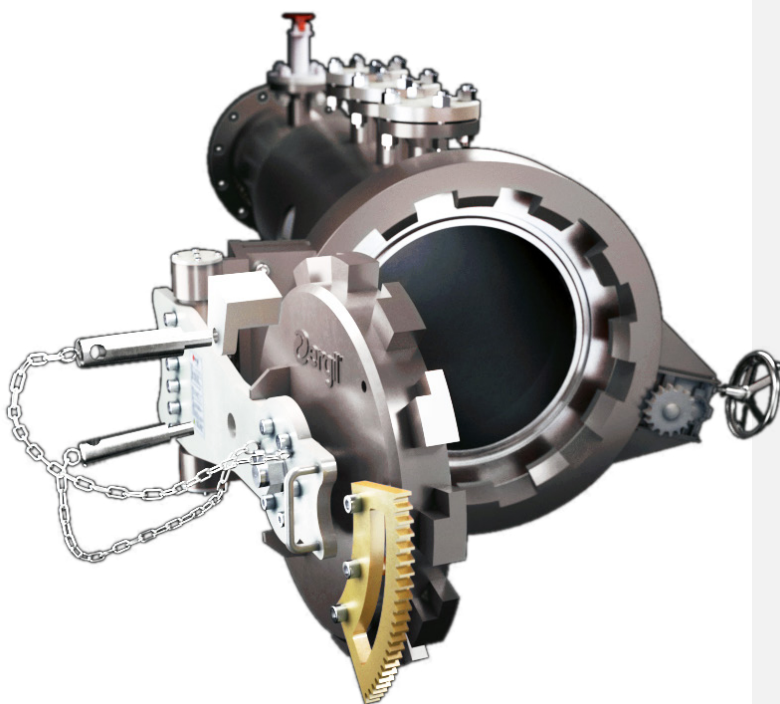


Product Description

Ergil Process Equipment provides RX1™ Byonet Type Quick Closures to oil, gas and liquid service and operator companies.

Ergil is capable of providing quick closures for any size and pressure ratings.

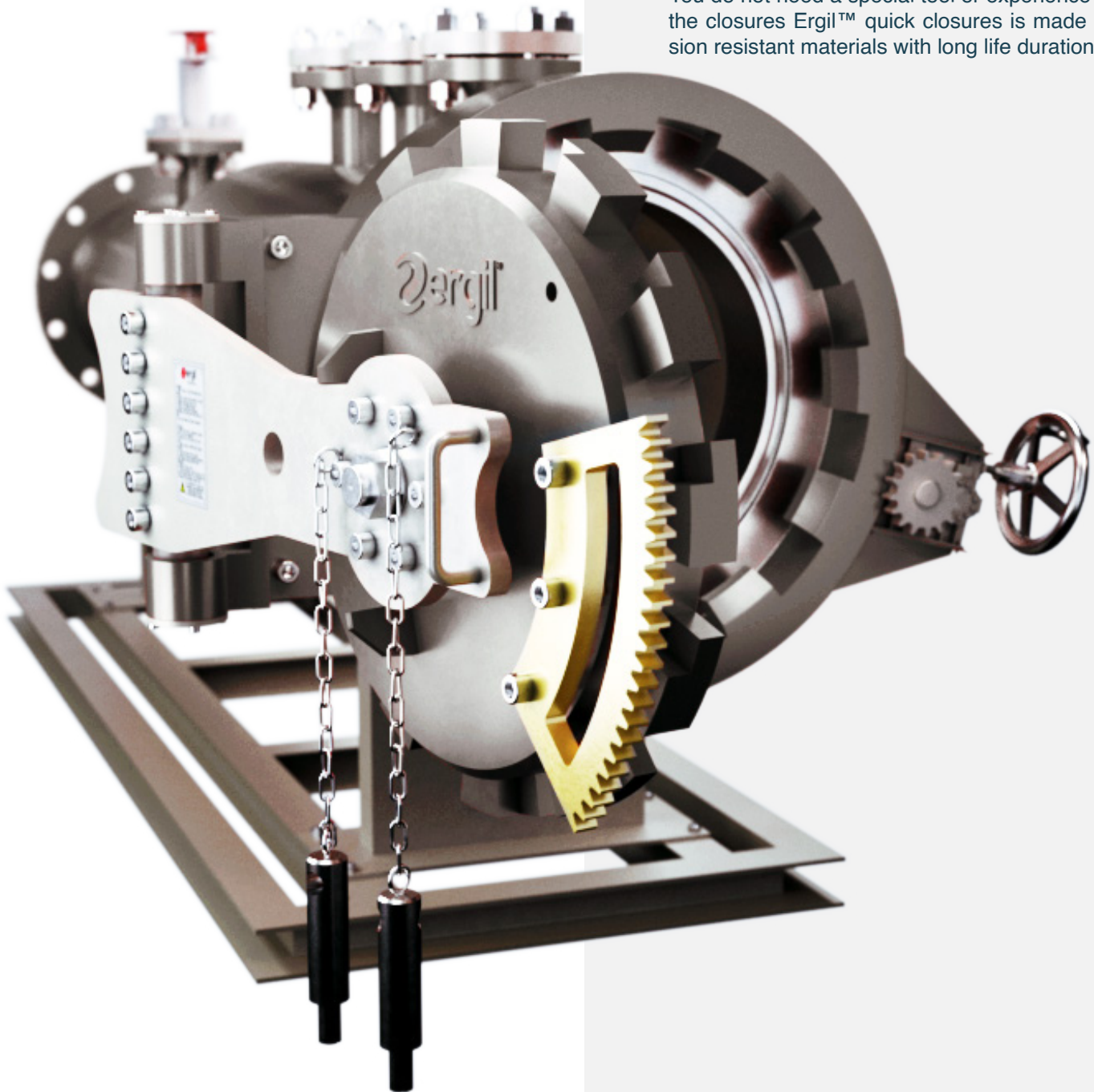
STANDARD ERGIL™ PIG LAUNCHER & PIG RECEIVERS comes with the STANDARD ERGIL™ RX1 QUICK CLOSURE.



Size Range	6" to 52" Nominal
Class Rating	ANSI 150, 300, 600, 900, 1500
Design Specification	ASME VIII Division 1 ASME VIII Division 2 ANSI B31.3, B31.4, B31.8 Other international standards are available on request.
Closure Configurations	API Class 150, PN16, and Special
Material of Construction	ASTM A 350 LF2 / ASME II SA350 Lf2 ASTM A 105/ ASME II SA 105 304L or 306L Stainless Steel and Duplex Stainless Steel
Sealing	Elastomeric Lip Seal, Nitrile, Viton, Pur, Elast-O-Lion . Others on request
Accessories	Key Interlock System Pig indicator

Product Benefits

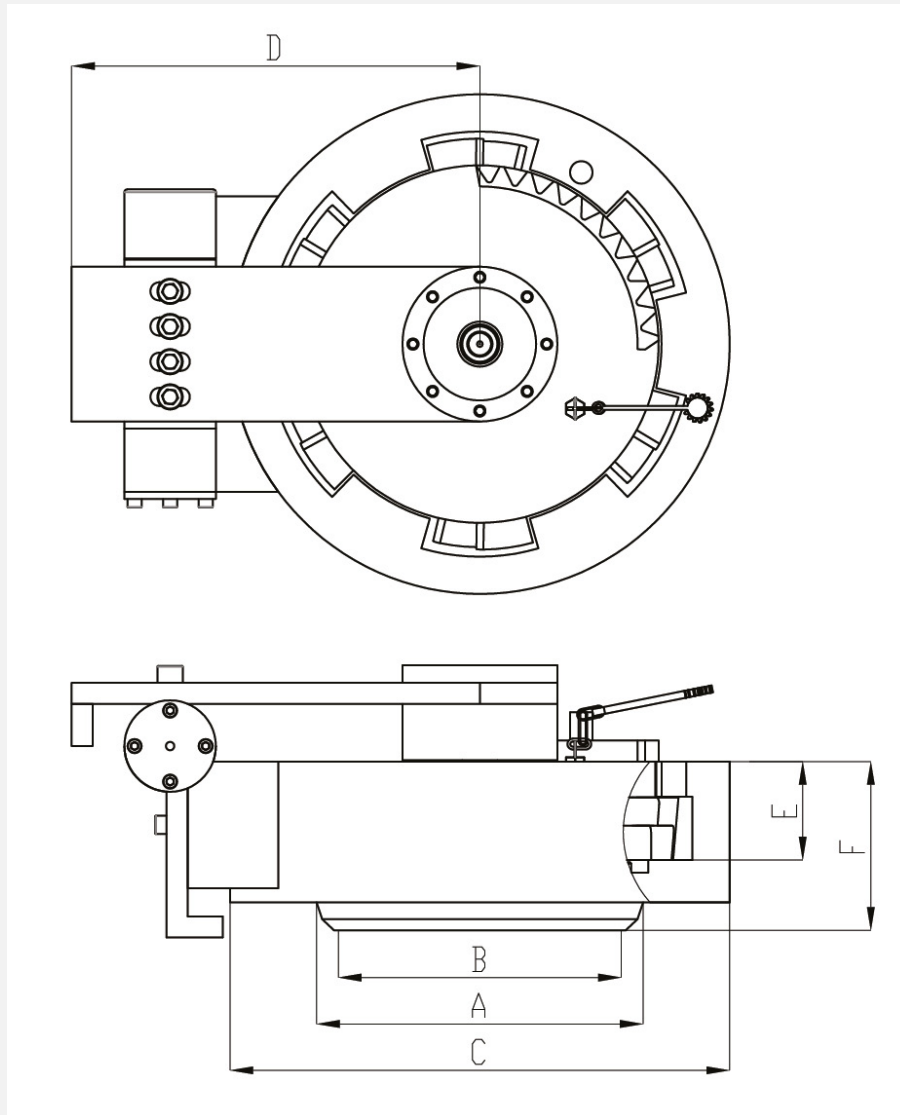
- Easy to use and install, can be applied all kind of pressure vessels.
- You do not need a special tool or experience to install the closures Ergil™ quick closures is made of corrosion resistant materials with long life duration.



Key Features

- Designed to ASME B31.4 , ASME B31.8 and ASME Section VIII Div. 1 Codes.
- All RX™ Quick Closures comes with the sand blasted and primer coated and color of your choice.
- RX™ Quick Closures can be hydrostatically tested on request.
- Ergil™ offers spare parts for all of its products during maintenance.
- Internal inspection and test certificates will be provided for each item.
- Third party inspection can be provided TUV, Breu Veritas, or Lloyd if it is requested.

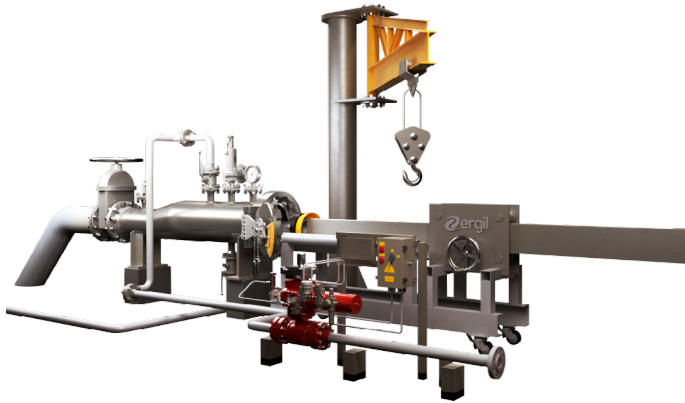
Technical Drawing



Weight & Dimensions

A Size Inch (mm)	B Overall Inside Diameter Inch (mm)	C Overall Outside Diameter Inch (mm)	D Overall Length Inch (mm)	E Height Inch (mm)	F Height Inch (mm)
10 (274)	10-1/4 (261)	14-3/4 (375)	8-2/3 (220)	1-3/9 (33)	2-9/10 (75)
12 (323,9)	11-1/2 (293)	19 (483)	11-1/9 (282)	2-3/9 (60)	7-2/7 (185)
14 (355,6)	13-1/7 (333,4)	19-3/5 (498)	11-3/5 (295)	2-9/10 (75)	6-1/10 (155)
16 (406,4)	15-1/3 (388,6)	22 (560)	12-9/10 (328)	2-9/10 (74)	6-7/10 (170)
18 (457)	17-1/5 (437)	24-3/4 (629)	12-9/10 (328)	2-9/11 (71,5)	5 (126)
20 (508)	19-1/8 (485,7)	27-1/2 (699)	16-1/10 (409)	3-1/7 (80)	5-1/5 (140)
30 (761,7)	29 (735)	39-3/8 (1000)	23-2/9 (590)	4-5/7 (120)	11-1/2 (292)
36 (914)	34-3/4 (882)	47-2/8 (1200)	28 (712)	2-9/10 (75)	9-1/4 (235)
40 (1016)	38-3/4 (984)	50-7/9 (1290)	29-5/6 (758)	3-1/8 (79,5)	9-6/7 (250)
44 (117,4)	42-1/6 (1071)	60-5/8 (1540)	39-1/5 (996)	6-5/7 (170,5)	12-1/8 (308)
48 (1219,2)	42-2/6 (1169,2)	61-1/7 (1675)	35-3/4 (980)	8 (204)	14-1/2 (368)

Product Recommendations



Skid Mounted Complete
Pigging Systems

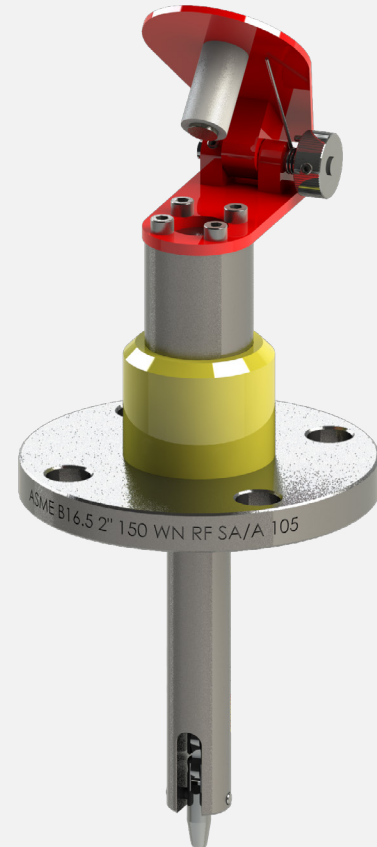
Pipeline pigging systems are the heart and soul of any pipeline. They are the crucial part for the operation. Pipeline pig stations are used for pipeline inspection, cleaning, maintenance and help flow of multiple products at the same time.

Due to the increasing safety, environmental and operational cost, pipeline operation is more expensive than before. Today's pipeline operators are looking for more reliable, safe and sustainable solutions.

Thanks to 40 years of experience, ERGIL provides unique solutions for pipeline pigging stations.

ERGIL's modular pigging stations provide all you need on a single skid. ERGIL designs mobile or permanent frames with adjustable height mechanisms, so moving from one place to another and using it for multiple pipelines is possible.

They are easy to transport from one location to another. Modules can be designed as per the shipping method (sea, road and even air) and the system can be customizable as per working environment to protect against rush weather effects or robbery.



Pig Signaller
Pipeline Pigging System

ERGIL provides pig signals / indicators for pipeline industry for the extreme conditions.

Pig indicator is a device that is used on a pipeline to show an indication to operator during the pipeline pigging.

ERGIL Pig Indicator is a economical solution that can be applied all kind of pigging systems.

35.000
SQUARE METER
MANUFACTURING
SPACE



300+
EMPLOYEES



40
YEARS
OF EXPERIENCE



4 MAIN
OFFICE



200+
DIVERSE RANGE
PRODUCTS



30+
INTERNATIONAL
REPRESENTATIVES



QUALITY
CERTIFICATES



AT 4
REGIONS



Äger GmbH

Germany Head Office + R&D + Sales

Herzogspitalstraße 24
Munich 80331
Germany
+49 89 9040 5200
www.aager.de
sales@aager.de

Turkey Head Office + Sales

Ağaoğlu My Office 212
No: 3 B Blok /175
P.K 34218 Güneşli – Bağcılar
Istanbul / Turkey
+90 212 485 40 07
+90 212 485 40 42
www.ergil.com
sales@ergil.com

Turkey Factory + Engineering + R&D + Sales

Mersin Tarsus OSB.13.CD.NO:7
P.K: 33540 Mersin, Turkey
+90 324 676 44 04
+90 324 676 44 03
sales@ergil.com

U.A.E. Sales + Warehouse

Jumeirah Lake Towers, X2 Tower 1906
P.O. Box: 123661 Dubai, U.A.E.
+971 4 450 8051
+971 4 450 8041
sales@ergil.com

data sheet series

Quick Opening Closure
Rx1™ Byonet Type

Revision No: 01
ER-DS-QOC.T1-05.21/V1
ergil.com

May 2021

