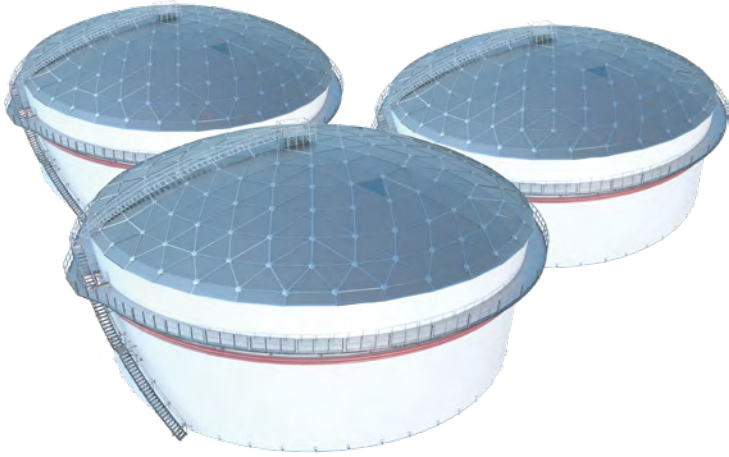


Storage Tanks **Aluminum Dome Roof**





Storagetech Aluminum Dome Roofs

As an Äger brand, Storagetech designed with its 40 years of experience, aluminum domeroofs for services, innovative solutions, and a wealth of industry experience combined to provide the total package for your aluminum cover requirements.

It is designed as self-supporting and represents the pinnacle of precision-designed aluminum covers. The lightweight construction allows covering large-diameter tanks without intermediate support. The material quality offers excellent resistance to atmospheric corrosion (e.g. industrial reservoirs or seaside facilities), is virtually maintenance-free, and is designed for extended service life.

Product Specifications

- Aluminum domeroofs offer complete turnkey design, supply, and field installation.
- Provides emissions reduction.
- Laser cutting technology is used for fine and precise cutting of the roof panels.
- The highly modular and standardized design provides price competitiveness.
- Compatible with the weight of suspended aluminum internal floating roofs (IFR).

- Compatible with current systems so that the tanks can remain in service during the installation process.
- The geodesic aluminum dome roof is fully compliant with ISO EN 1090, API 650, AWWA, and ASCE7 specifications





Water Tightness: The design guaranteed absolute zero leakage. It avoids water penetration, deterioration, and water intrusion.

Tailor-Made Profiles: The usage profiles are designed as per higher risk factors and avoid using lighter non-compliance profiles.

Choosing the Right Bolts: Storagetech always recommends using lock bolts to increase the profile connection stability.

Choosing the Right Seal: Storagetech always recommends using wiping seals to avoid leakage and increase the lifetime cycle.

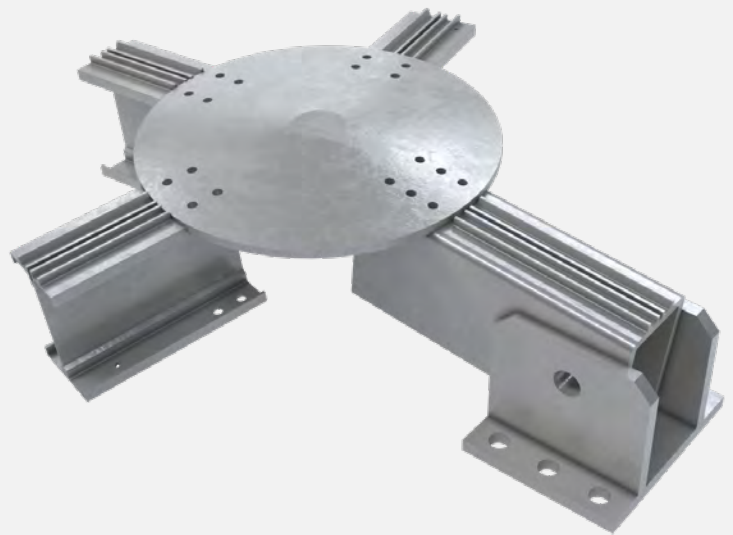


Our Differences

Superior Engineering: Storagetech uses the latest engineering structural analysis software, 3D CAD design software, and structural design of steel connections as compared to traditional outdated calculation methods.

Designs for Regional Parameters: Storagetech design its domeroofs as per regional environmental, and seismic parameters with keeping regulations in mind.

The Safety Solution: Storagetech considers high-risk factors in our calculation and provides the safest profile design as per international standards.



Internal Pressure: The domeroofs are designed to consider the customer's storage tank's internal pressure and offer tailor-made solutions to fully meet the requirements.

Compatibility: Whether it is an existing tank or a new tank, Storagetech's design provides custom solutions considering the tank design and local requirements.

Experience in Installation: Storagetech guarantees the availability of an experienced site installation team or supervisor as per customers' requirements.

Äger GmbH

Germany Head Office + R&D + Sales

Herzogspitalstraße 24
Munich 80331
Germany
+49 (0) 89 1250 15240
www.aager.de
sales@aager.de

Turkey Head Office + Sales

Ağaoğlu My Office 212
No: 3 B Blok /175
P.K 34218 Güneşli – Bağcılar
Istanbul / Turkey
+90 212 485 40 07
+90 212 485 40 42
www.ergil.com
sales@aager.de

Turkey Factory + Engineering + R&D + Sales

Mersin Tarsus OSB.13.CD.NO:7
P.K: 33540 Mersin, Turkey
+90 324 676 44 04
+90 324 676 44 03
sales@aager.de

U.A.E. Sales + Warehouse

Jumeirah Lake Towers, X2 Tower 1906
P.O. Box: 123661 Dubai, U.A.E.
+971 4 450 8051
+971 4 450 8041
sales@aager.de



catalog series

Storagetech™

Revision No: 03
DR-CT03.23/V3
storagetech.de

March 2022

